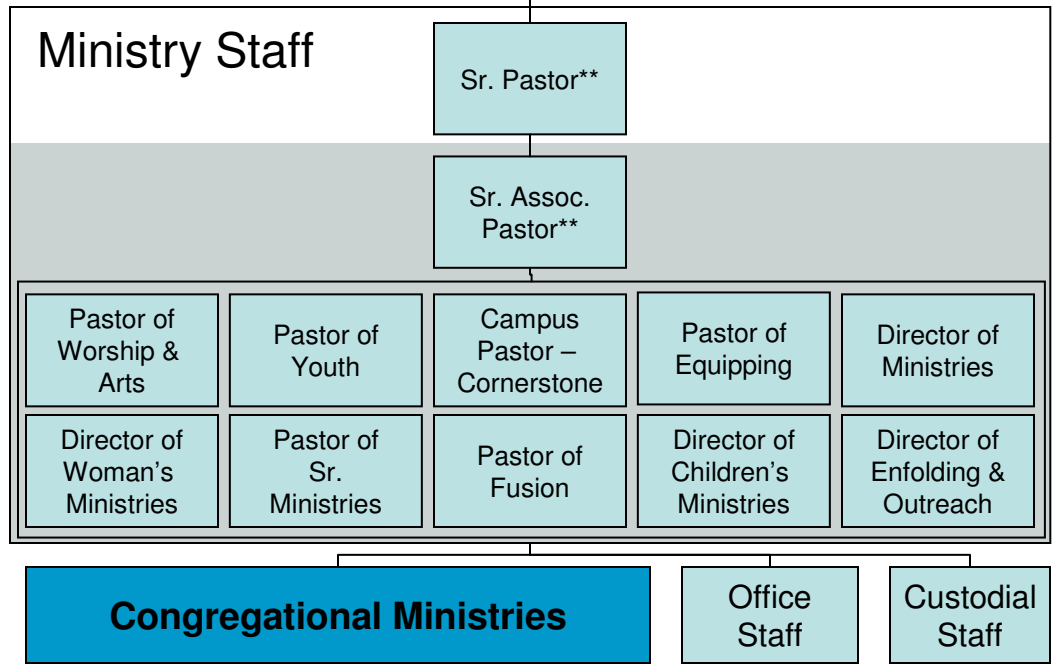
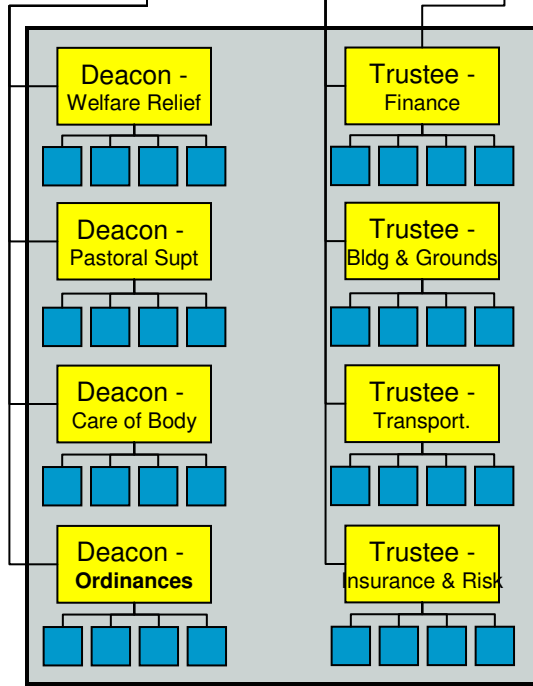
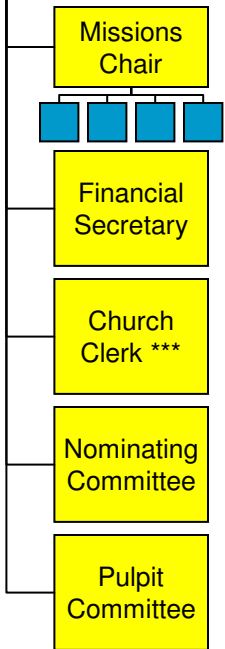
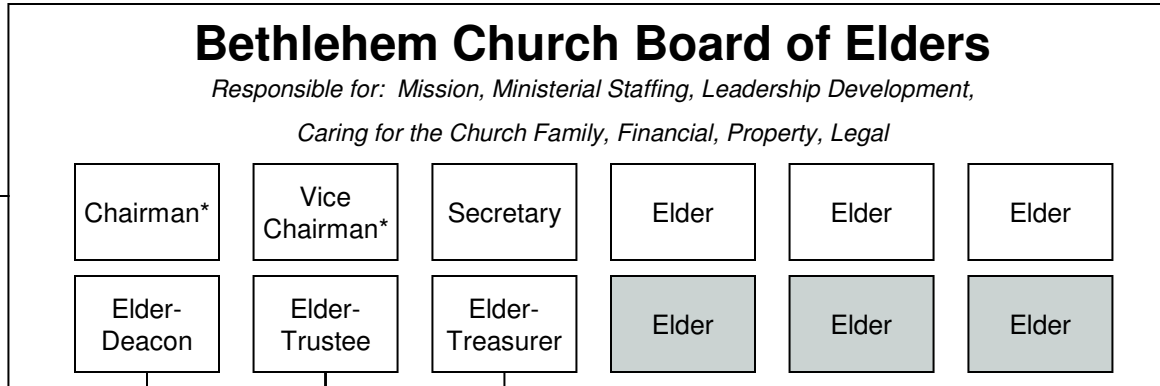


Bethlehem Church – Proposed Governance Structure



Elected Position – Male Members
 Optional Position / Assignment
 Paid Position

Appointed by Elders – Male or Female (Members)
 Committee Members – Male or Female Congregants
 * Member of Executive Leadership Team

** Member of Board of Elders and Executive Leadership Team
 *** Not required to be a member